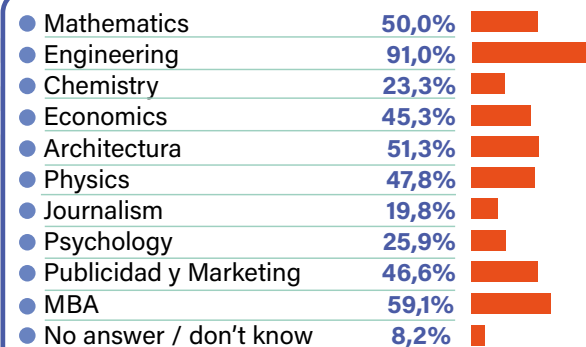


SURVEY

National scope.
December 2024 – April 2025

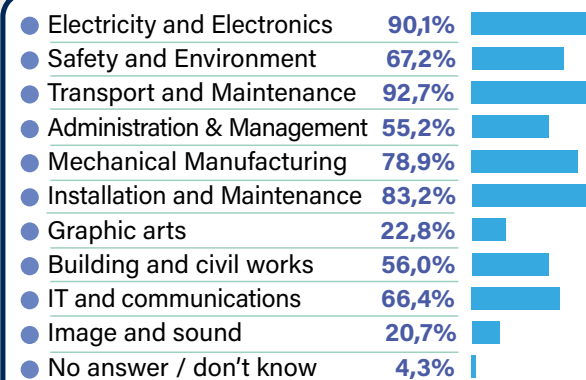
51.5% know a woman who works in the railway sector.
71.6% of people believe they could work in the railway sector.

What UNIVERSITY studies do you think people working in the railway sector must have?



The total percentage exceeds 100% because respondents could select more than one option.

What VOCATIONAL TRAINING do you think people working in the railway sector must have?



The total percentage exceeds 100% because respondents could select more than one option.

THE PROJECT

NIÑAS AL TREN DE LA CIENCIA Y LA TECNOLOGÍA has worked to:

- Promote scientific vocations and an innovative spirit among students (especially girls) by encouraging them to pursue disciplines related to research and innovation in the railway sector.
- Advance gender equality and the empowerment of girls and women through education in fields related to railways.
- Bring science, technology, and research and innovation activities in the railway sector closer to Spanish society.
- Raise awareness of the scientific technological and innovation developments carried out by Spanish institutions and research centers.
- Promote recognition of the railway as an example of the values that scientific technological and innovation advancements contribute to social, economic, environmental and safety-related well-being.

The project is funded by FECYT within the framework of the 2023 Call for Grants to Promote Scientific, Technological, and Innovation Culture (FCT-23-19207).

www.ffe.es/niñasaltrendelaccytec/



Fundación de los
FERROCARRILES
Españoles



Con la colaboración de:



Fundación de los
FERROCARRILES
Españoles

OBJETIVES OF NIÑAS AL TREN DE LA CIENCIA Y LA TECNOLOGÍA

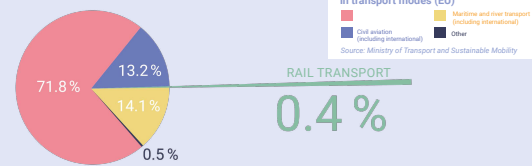
- Increase scientific and technological vocations among girls.
- Raise awareness among boys and girls about the importance of the role of women in the world of railway science and technology.
- Inform about the challenges women have faced in this field of work.
- Explain the impact that scientific and technological professions in the railway sector have on societal advancement.



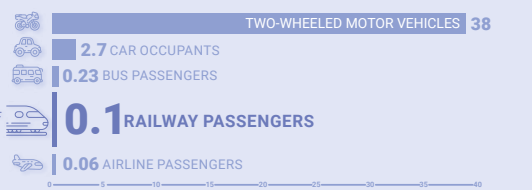
AND WHY CAN'T YOU MISS THIS TRAIN?



THE RAILWAY IS SUSTAINABLE



IS SAFE



CONNECTS PEOPLE



SPANISH RAILWAY INDUSTRY



WOMEN ON THE RAILWAY

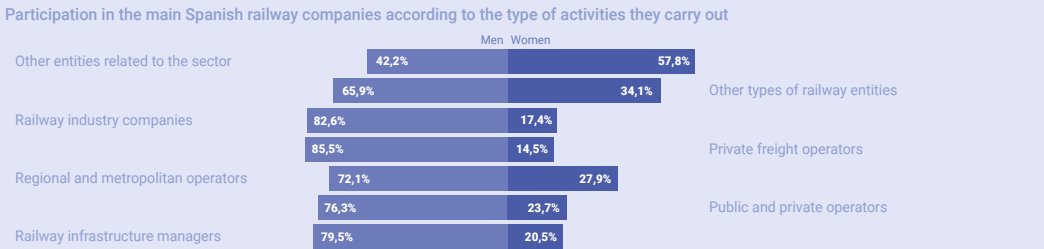


AND WHY CAN'T YOU MISS THIS TRAIN?



THE RAILWAY

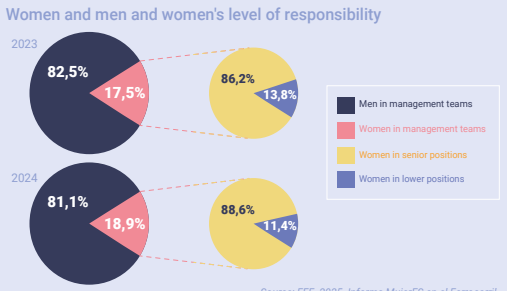
EMPLOYMENT



ENGINEERS



MANAGEMENT TEAMS



EMPLOYMENT PROFILE



GUIDING PRINCIPLES OF STEM:

- Promote inquiry-based learning, critical thinking and scientific practice.
- Encourage active teaching and autonomous thinking that allows for exploratory, reflective, creative and transformative learning.
- Empower generations to use science, technology, engineering and mathematics (STEM) skills and reflective reasoning to solve complex problems and innovate.
- To face the challenges of society and contribute to its progress in different areas.

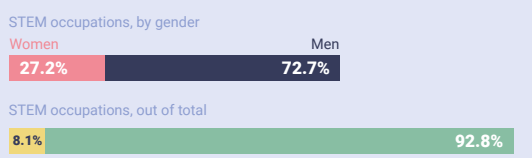


AND WHY CAN'T YOU MISS THIS TRAIN?

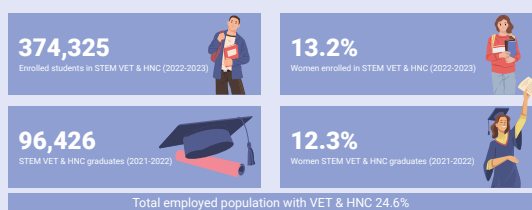


WOMEN IN THE STEM SECTOR

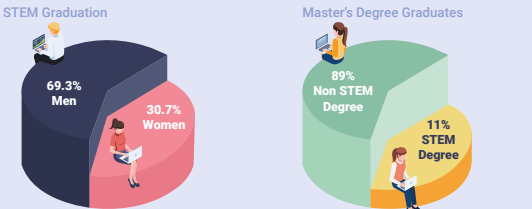
LABOR PARTICIPATION



STEM VET & HNC



UNIVERSITY STUDENTS STEM



THE LABOR MARKET FOR STEM OCCUPATIONS IN SPAIN

